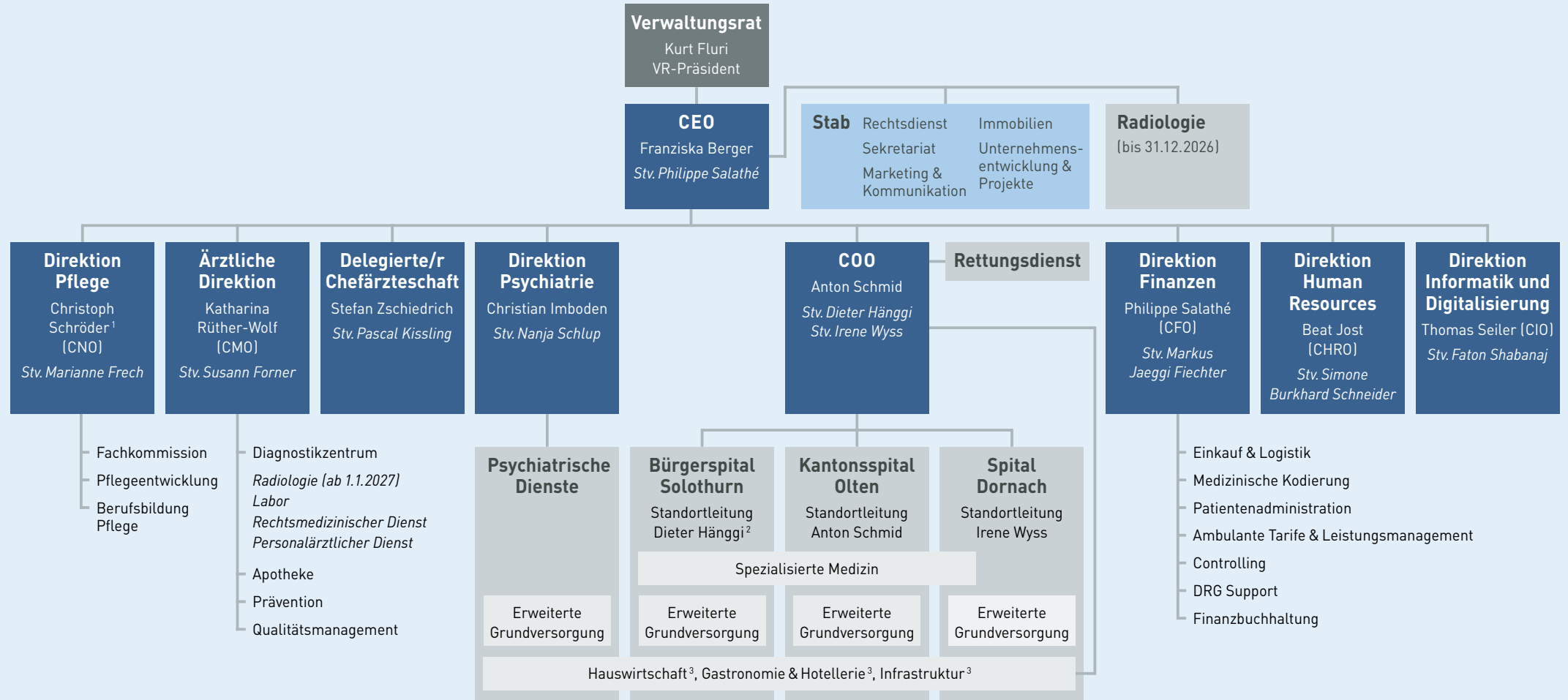


# Organigramm soH

ab 1. April 2026

GESCHÄFTSLEITUNG



CEO = Chief Executive Officer | Geschäftsführerin

CNO = Chief Nursing Officer | Direktor Pflegedienst

CFO = Chief Financial Officer | Direktor Finanzen

1 Leiter Pflege Kantonsspital Olten

CMO = Chief Medical Officer | Ärztliche Direktorin

CHRO = Chief Human Resources Officer | Direktor HRM

2 Leiter Pflege Bürgerspital Solothurn

COO = Chief Operating Officer | Operativer Geschäftsführer

CIO = Chief Information Officer | Direktor Informatik

3 Konsolidierung nach dem 1. Januar 2026